

DLQHD LIQUID APPLICATOR



27' Bar, Single Fold
32' Bar, Single Fold
35' Bar, Single Fold
35' Bar, Hydraulic Double Fold
42' Bar, Hydraulic Double Fold

The **DLQHD Series Liquid Applicator** is built “**TUFF**” for the most rugged terrain. The 4 x 6 tubular main frame and the 4 x 6 front mount toolbar give you the strength and the visibility you need in today’s environment.

This unit features the versatility of handling a 27’ to 42’ toolbar and 15” – 36” row spacing. The ground driven pump and drive system include a 15” bar lug shur grip tire and stainless steel drive chain.

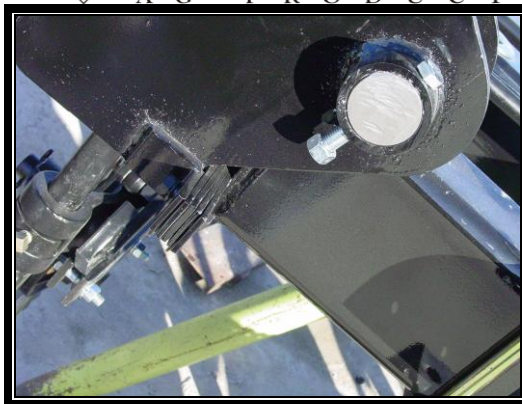
Optional single or twin piston pump gives you a large range of application rates. The coulter injection equipped with straight stream nozzle applies the fertilizer where needed.



602 E. VAN BUREN
PO BOX 70
LENOX, IA. 50851
www.daltonagproducts.com



PH: 641-333-4518
FAX: 641-333-4429
800-342-7498
daltonag@frontiernet.net



Removable spacer's for wing tilt.



20" Coulters
injection with
straight
stream
nozzle and
stainless
steel nipple
injects the
fertilizer
directly
behind the
coulters.



The spring-
loaded ground
driven pump is
mounted on
front bar for
better visibility
and auto-
matically stops
when toolbar
is lifted for
turnaround.



Adjustable
dual clevis
and
10000#
drop foot
jack.
Front hose
stand
keeps
hoses
away from
tractor
hitch.



High clearance 46" lug
tires with heavy 8-bolt
hubs give you maximum
crop clearance.

SPECIFICATIONS:

Working Widths = 27.5' – 32.5' – 35.5' – 42.5'

**Main Frame = 5" x 7" Rec. Tube
Toolbar = 4" x 6" Rec. Tube**

Tire Size = 14.9/46 – 10 Bolt Wheel

Tank Sizes = 1000 & 1250 Gallon

SERVICE PARTS FOR TOTE, MOBILITY, JTI EQUIPMENT & VITON MODEL 10 PUMP

